

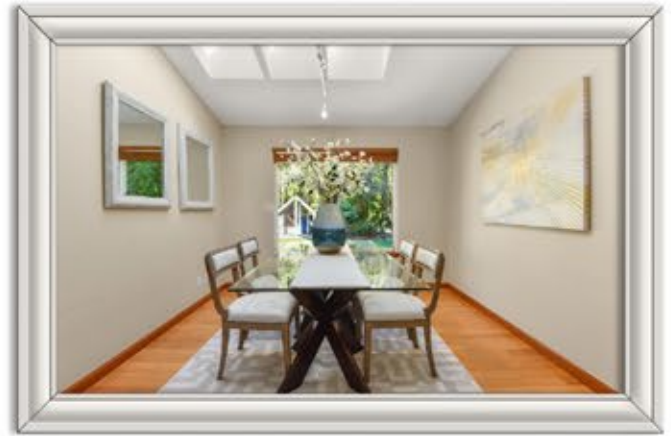


Glenwood Estates

1719 243rd Place SE Bothell, WA 98021



www.dorisong.com



Glenwood Estates

Beautiful Maywood Hills home! Welcome to this remodeled home with formal living room with vaulted ceilings and brick fireplace. Kitchen is open and bright with granite counter tops, newer cabinetry and engineered flooring. Large open eating area opens to a custom wet bar and a spacious family room. Traditional floorplan is highly desired with living, dining, kitchen and family rooms on the main level and all bedrooms up. Upgrades include white vinyl windows, plush carpeting and roof. Exterior has just been freshly painted. Very private yard with shop/storage shed and play house and it backs up to Stipek Park. Fully fenced, this yard provides ample play space and accommodates RV/Boat parking with concrete pad. From the kitchen, walk out to an entertaining sized patio that is perfect for summer BBQ's. Very clean and nicely maintained home that is a must see!





 **Doris Ong**

cell: 425.890.2087
e-mail: homes@dorisong.com

1719 243rd Place SE Bothell, WA 98021

MLS# 1580317 Offered At: \$725,000

3 bedroom 2.5 bath Approximate Living sf: 2,263 sf

Lot Size per kcr: 9,583 sf Real property tax: \$5,729 2019


Windermere
REAL ESTATE

*Buyer to verify all information to their satisfaction
© Doris Ong, Inc. 2020