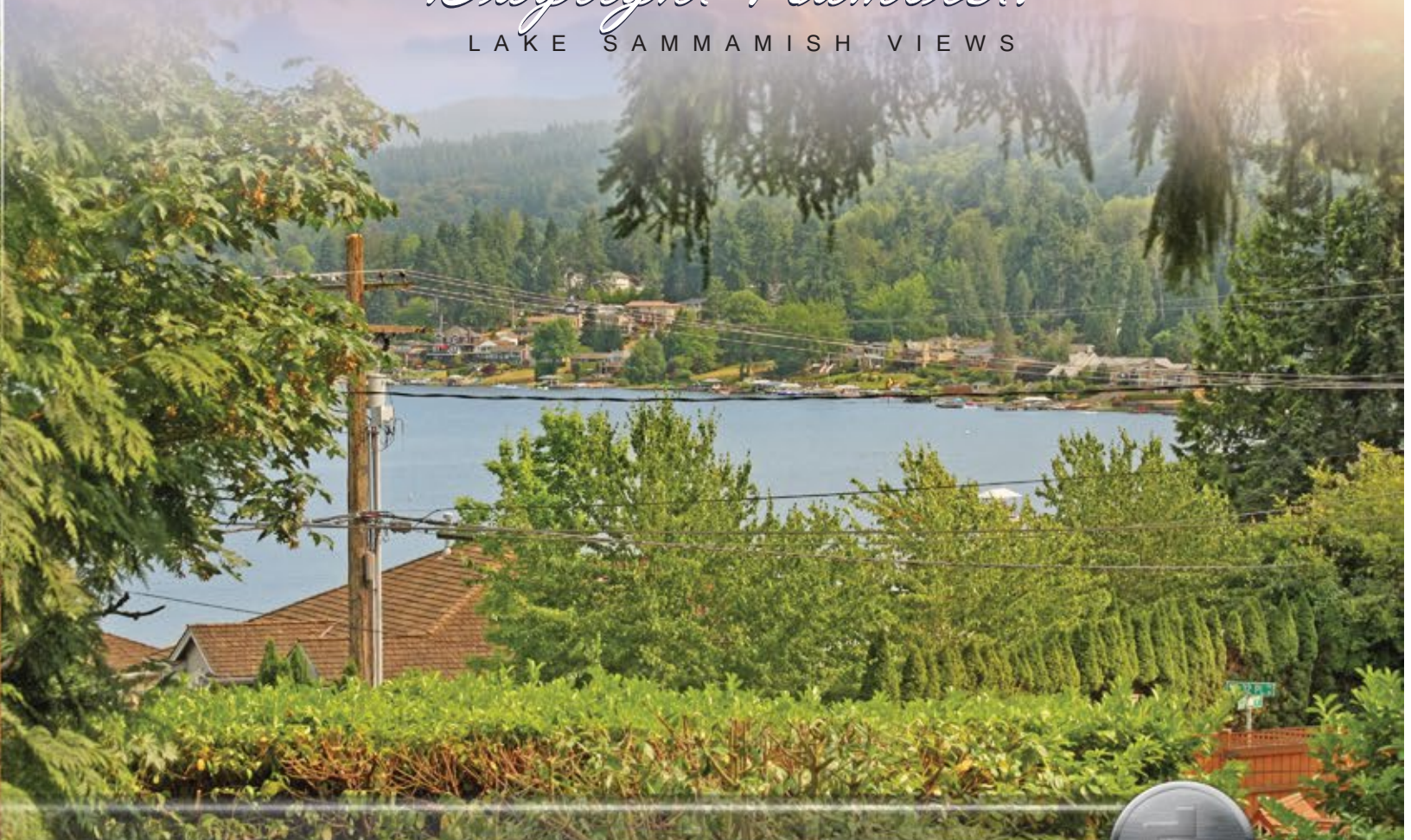




Daylight Rambler!
LAKE SAMMAMISH VIEWS



www.dorison.com



Daylight Rambler with Lake Sammamish Views!



Daylight rambler with views of Lake Sammamish! Huge 11,000+ square foot lot! Excellent location close to I-90 access and Microsoft campus via West Lake. Enjoy this nicely remodeled home and its many upgrades... kitchen features new cabinets, slab granite counters, stainless appliances and more! Trex like deck and clear glass railing just steps from the kitchen and living room. Enjoy evening BBQ's and relax with a view of the lake. Pergo flooring, new white vinyl Anderson windows, metal roof and landscaping upgrades make this home move in ready. Daylight basement could be used as a Mother-in-Law suite with its kitchenette, ¾ bath, utility room and entertainment space. Expansive backyard with planting areas, gardens and room to add a deck to further enjoy the lake view. Top Bellevue schools and close to parks and trails. See this one today!



17015 SE 31st Place Bellevue, WA 98008





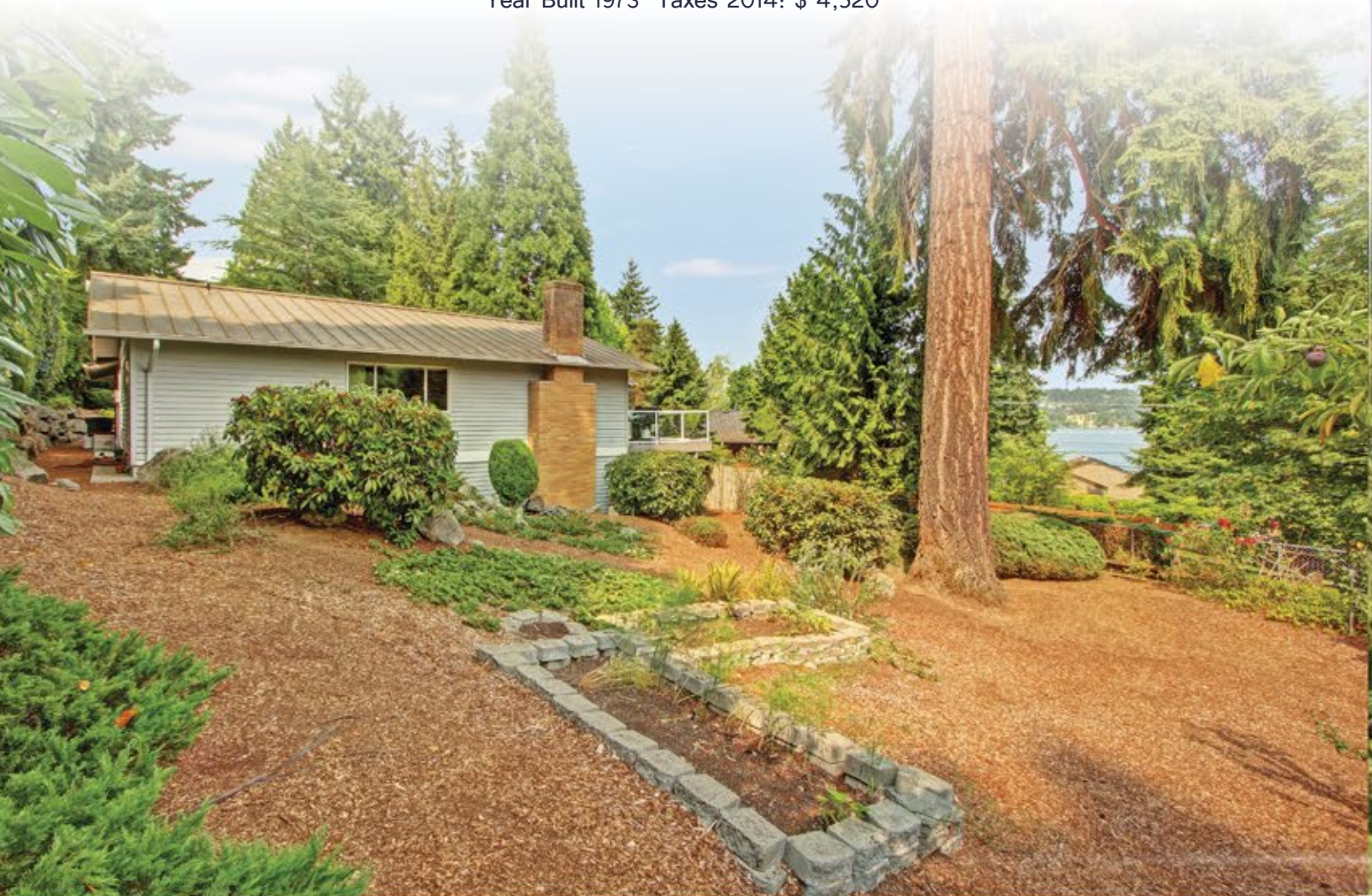
17015 SE 31st Place Bellevue, WA 98008

MLS#: 815244 Offered At: \$599,000

3 bedroom 2.5 bath

Living SF: ~ 2,300 sf Lot Size per kcr: 11,609 sf

Year Built 1973 Taxes 2014: \$ 4,520



For more information or for an appointment...

Call Doris today! cell: 425.890.2087

e-mail: homes@dorisong.com www.dorisong.com


Windermere
REAL ESTATE