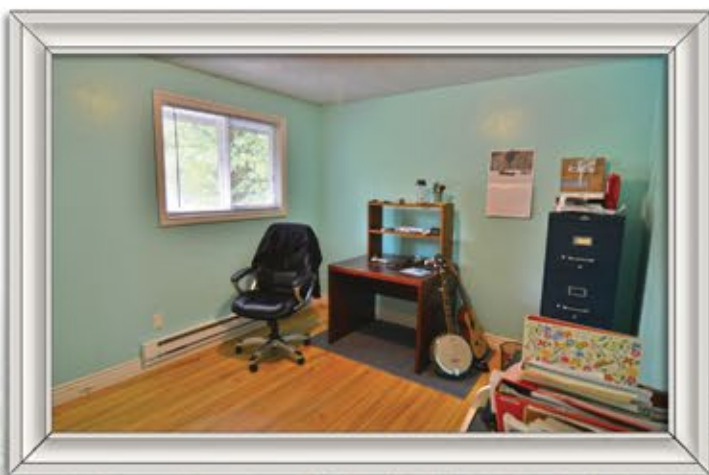
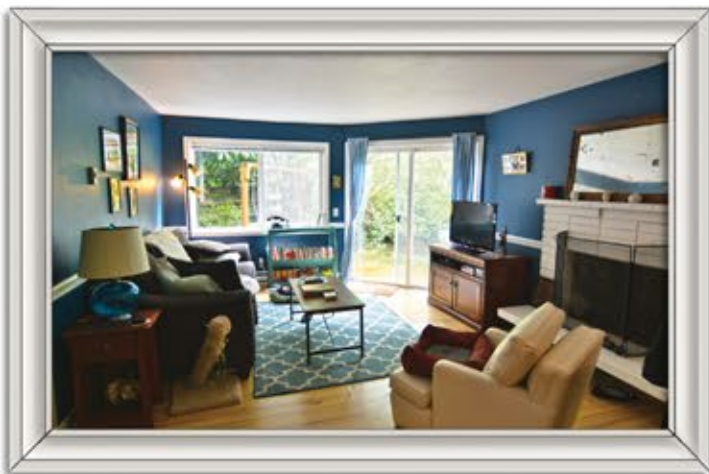


*Creekside Duplex in the Heart of Issaquah!*



[www.dorison.com](http://www.dorison.com)





Steps from the heart of downtown Issaquah. Walk to restaurants, wine bars, Tony Award winning theatre, historic buildings & shopping. This duplex property offers a great opportunity. Each home is a 1,000+ square foot 2 bdrm 1.5 bath with its' own enclosed garage and a private deck. Extra parking on property with plenty of street parking. Both units have updated kitchens, flooring, windows and paint. Both are currently rented with an opportunity to live in one and keep one rented for great income. Long term tenants want to stay and rents have potential for growth. Be a part of the Issaquah Urban community and live, work and play in the downtown core. Nearby parks and top Issaquah schools. Great freeway access to I-90. Recently voted by Sunset Magazine to be one of the best "Burbs" to live in!

215 / 217 NE Dogwood Street Issaquah, WA 98027

MLS #630831 Offered At: \$525,000

Duplex Home with two 2 bedroom 1.5 bath Units Gross SF: 2,660 Living SF: ~ 2,180 sf

Each with single car enclosed garage.

Lot Size per kcr: 12,196 sf Year Built 1968 Taxes 2013: \$3,975

For more information or for an appointment...

Call Doris today! cell: 425.890.2087

e-mail: homes@dorisong.com www.dorisong.com

Windermere  
REAL ESTATE