



Fabulous Snoqualmie Ridge!



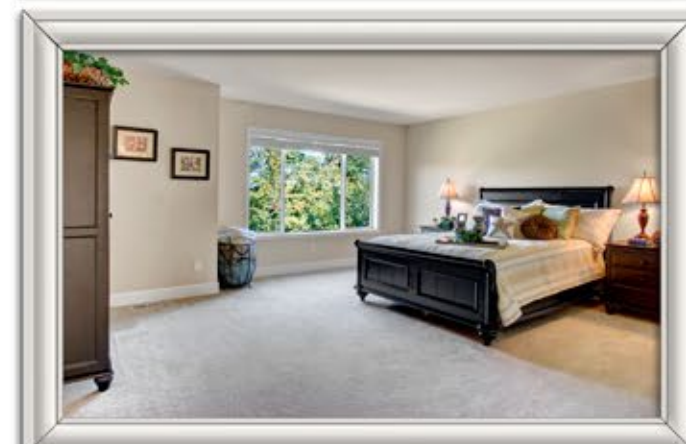
www.dorison.com



Fabulous Snoqualmie Ridge!



Murray Franklin resale with fabulous territorial view lot! Open space, grassy backyard, quiet street, and privacy looking out over the wonderful northwest foliage. Grand entrance with open soaring double height ceilings, iron rail details in the grand staircase that sets the stage for this beautiful home. Generous proportions in an excellent floorplan with formal living and dining rooms that seamlessly flows into casual living spaces of the great room with family, breakfast eating and island kitchen! Kitchen features slab granite counters, island kitchen, maple cabinetry, stainless appliances & hardwood floors. Cozy fireplace wired for flat panel. Slider opens to patio and lawn. Sought after Shelburne floorplan with 4 bedrooms upstairs, main floor den/office at entry and additional main floor multi-purpose bonus room adjacent to a 3/4 bath. Tandem 3 car garage perfect for workshop or for your boat! Close by shopping, parks and more! See this one today!



33928 SE Salal Street Snoqualmie, WA 98065





33928 SE Salal Street Snoqualmie, WA 98056

MLS #691203 Offered At: \$637,950

4 bedroom with Guest Room Plus Den 2.75 bath

Living SF: ~ 3,109 sf Lot Size per kcr: ~ 9,866 sf

Year Built 2007 Taxes 2014: \$ 6,432



For more information or for an appointment...

Call Doris today! cell: 425.890.2087

e-mail: homes@dorisong.com www.dorisong.com


Windermere
REAL ESTATE