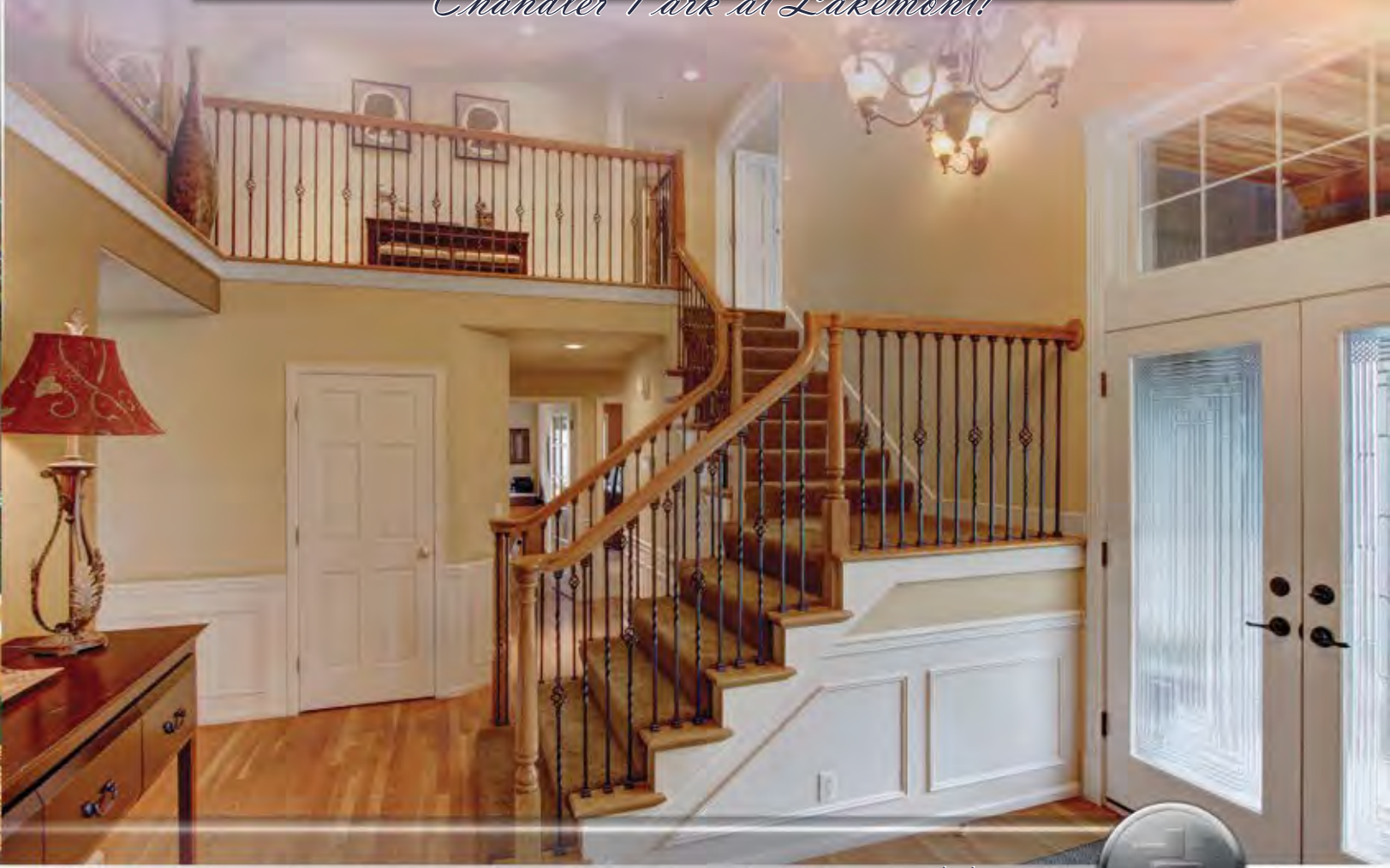




*Chandler Park at Lakemont!*



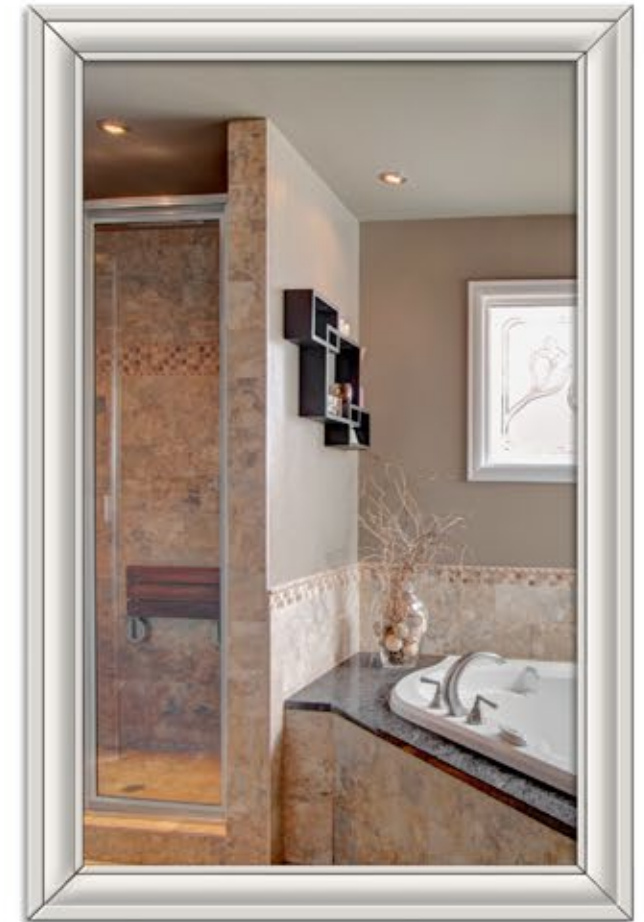
[www.dorison.com](http://www.dorison.com)



# Chandler Park at Lakemont!

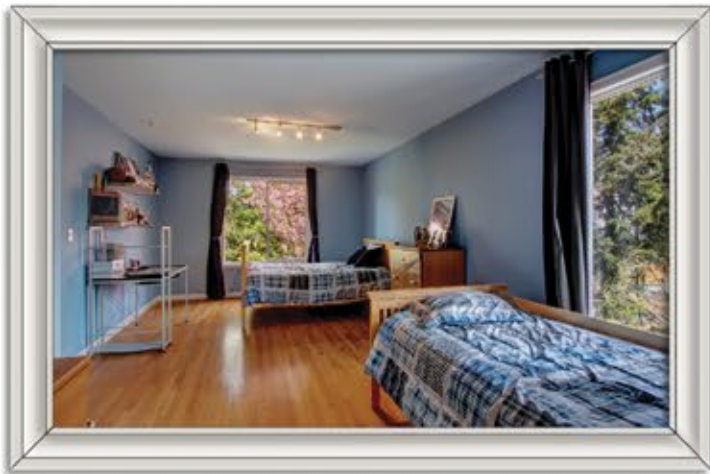


Chandler Park at Lakemont. Over \$200,000 in updates. This upgraded home features an extensive list of luxuries to accommodate today's lifestyle. It begins with the kitchen. Features include Subzero PRO 48" series refrigeration, the ultimate in food storage freshness. Wolf 48" dual fuel range featuring 6 gas burners, griddle, and two ovens proportioned by design to accommodate the largest of holiday gatherings. Canyon Creek cherry stained cabinetry, Santa Cecilia slab granite counters, Miele dishwasher and more. The kitchen is only the beginning. Wrought iron spindles adorn the grand double height entry and foyer. Formal living and dining rooms with trim details and designer paint. The master suite sanctuary opens to vaulted ceilings and a remodeled bathroom covered in marble, slab granite, and plumbing marvels that include an air jet tub for two, shower features with dual body wash stations, niche storage, teak bench and more. Glass mosaic, rope tile accents, and steel finishes define the style elements. Generously proportioned 2nd and 3rd bedroom configurations provide studio like living space in a bedroom. The basement level design provides a homework area, a large media room with extensive built-ins, a ¾ bath, and guest/music room. Private backyard with stamped concrete patio. Whole house features include new Presidential TL composition roof, Hardiplank siding, hardwood floors throughout the home, Hunter Douglas shades. Walk to neighborhood Park with grassy areas and playset. Excellent Lakemont location just minutes from I-90 and 405.



5627 167th Place SE Bellevue, WA 98006





5627 167th Place SE Bellevue, WA 98006

MLS #622140 Offered At: \$975,000

5 bedroom 3.5 bath Living SF: ~ 3,868 sf Lot Size per kcr: 10,257 sf

Year Built 1993 Taxes 2013: \$7,002



Chandler Park just minutes away!

For more information or for an appointment...

Call Doris today! cell: 425.890.2087

e-mail: homes@dorisong.com www.dorisong.com

  
Windermere  
REAL ESTATE